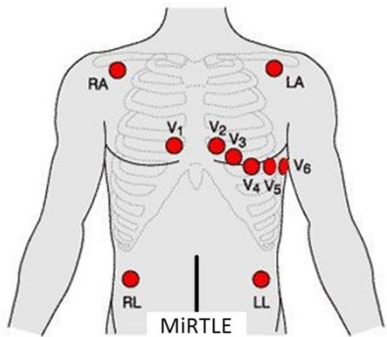


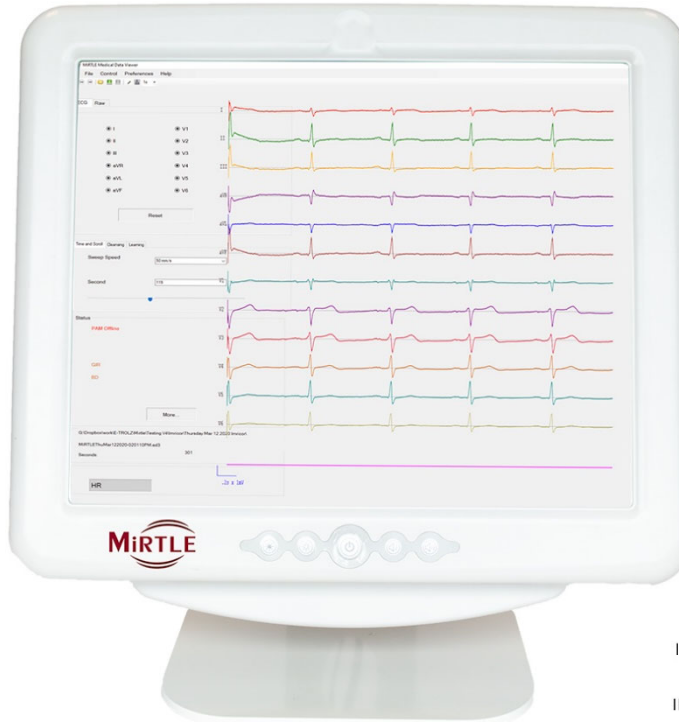
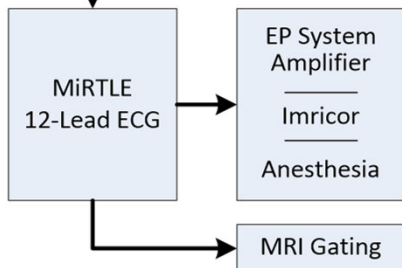


12-LEAD ECG DURING MRI

MiRTLE FOR ABLATION PROCEDURES & RESEARCH



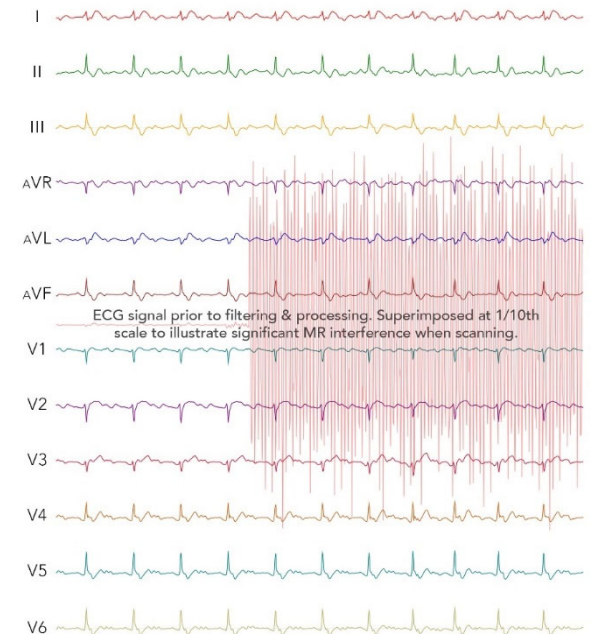
MiRTLE ECG Cable



EU Use
Device is cleared for clinical use

US Use
Device is not FDA approved
IRB required

Siemens Skyra 3T SSFP
Real-time Gradient
Artifact Removal



Features

- ECG 12-Lead, diagnostic grade
- Patient safety
- Improves scanner gating
- Diagnostic quality ECG during scan
- SSFP & GRE sequences cleansed
- Zero Radio Frequency noise in MRI
- Defibrillation protection
- EP system interface cable
- Imricor digital integration
- 10-hour battery life

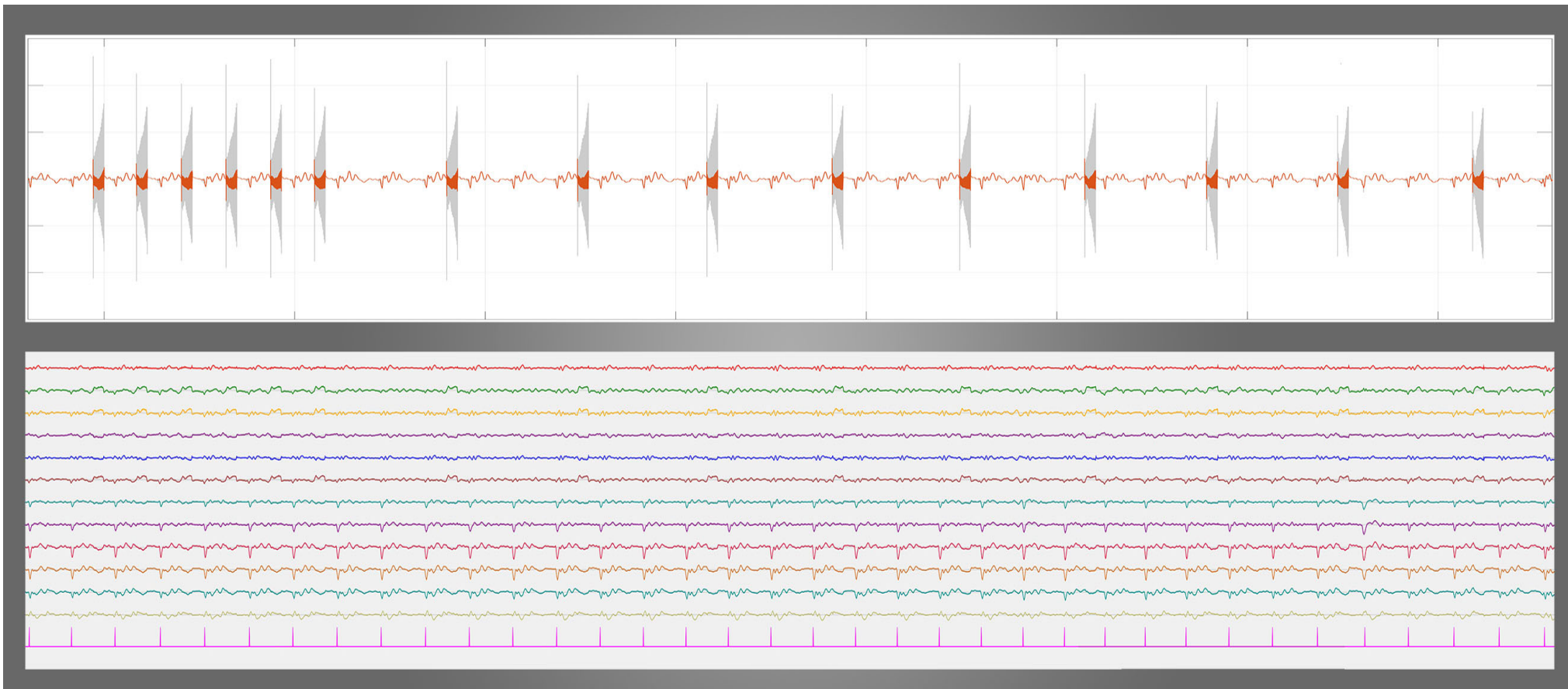
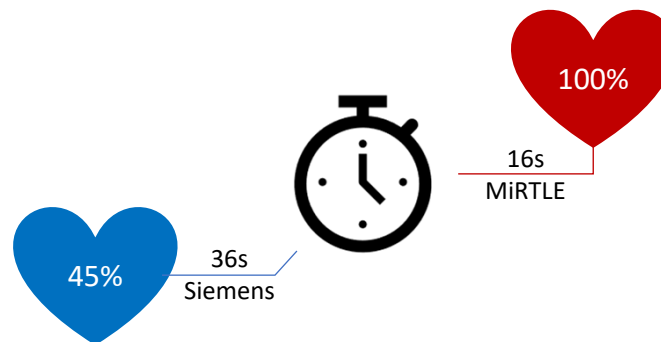
MiRTLE 12-lead ECG Gating Performance

SICK HEART PATIENT DATA

- 64 year old male patient in a Siemens 1.5T Aera using 16-channel cardiac array
- Imaging: 15 frame/R-R breath-held patient ECG-triggered multi-slice SSFP

RESULTS

- Siemens detected 15 of 33 beats, resulting in 36 second scan
- MiRTLE detected 33 of 33 beats, resulting in a 16 second scan



Top: MiRTLE lead V5 without gradient removal. Gradient illustrates when Siemens detected a beat.

Bottom: MiRTLE 12-lead ECG traces, same signal as above, with gradient removal. Lowest row indicates detected QRS complexes.

For information contact:
Jay Ward
jay.ward@mirtlemed.com